

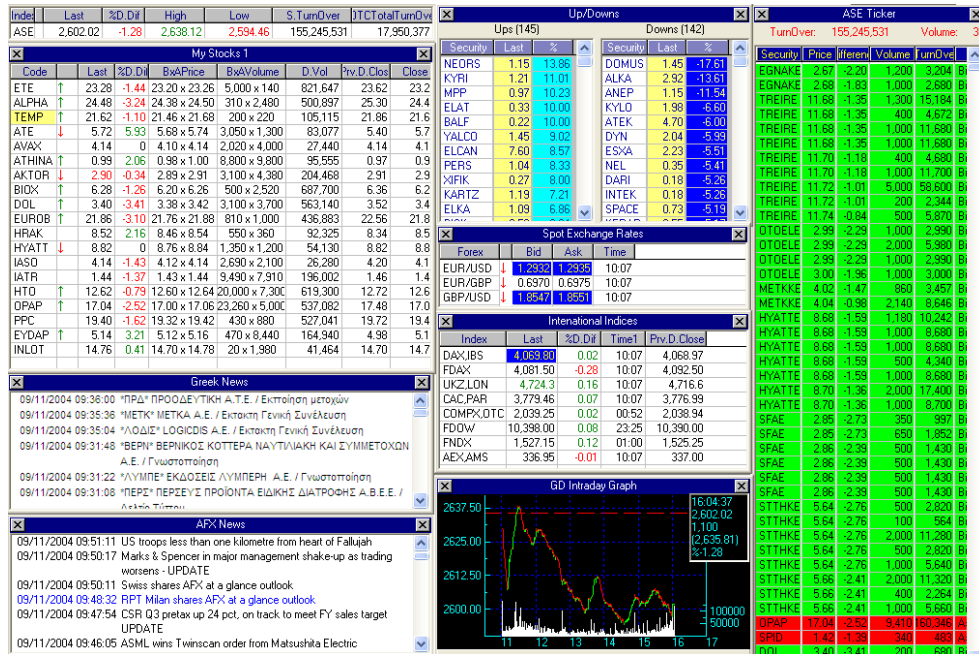
INFOREX SA

---

Financial Information Services

# FX2000 - Quick Reference Guide

# FX2000 - Quick Reference Guide



© Inforex SA

44 Kolokotroni Str. • 5<sup>th</sup> Floor Athens 105 60  
 Phone +30.210.3255511 • Fax +30.210.3255515

# Table of Contents

|   |           |                                    |           |
|---|-----------|------------------------------------|-----------|
| <b>Introduction</b>                       | <b>1</b>  |                                    |           |
| <b>CHAPTER 1</b>                          |           | <b>CHAPTER 3</b>                   |           |
| <b>FX2000 MAIN MENU</b>                   |           | <b>TECHNICAL ANALYSIS</b>          |           |
| <b>FX2000 Main Menu</b>                   | <b>2</b>  | <b>How to Add an Indicator</b>     | <b>22</b> |
| <b>Ready-made Price Windows</b>           | <b>5</b>  | <b>How to Change Parameters</b>    | <b>24</b> |
| <b>How to Call a pre-defined layout</b>   | <b>6</b>  | <b>How to Change Period</b>        | <b>25</b> |
| <b>How To Save/Delete/Rename a layout</b> | <b>7</b>  | <b>How To Change Chart-type</b>    | <b>26</b> |
| <b>ASE Ticker</b>                         | <b>8</b>  | <b>How To Draw Trend lines</b>     | <b>26</b> |
| <b>ASE Ups and Downs</b>                  | <b>9</b>  |                                    |           |
| <b>Session Statistics</b>                 | <b>10</b> | <b>CHAPTER 4</b>                   |           |
| <b>Waiting Order Analysis</b>             | <b>10</b> | <b>DATA SPEED &amp; CONNECTION</b> | <b>27</b> |
| <b>ASE Splits</b>                         | <b>11</b> |                                    |           |
| <b>Balance Sheets Analysis</b>            | <b>12</b> |                                    |           |
| <b>Greek News</b>                         | <b>13</b> |                                    |           |
| <b>AFX News</b>                           | <b>15</b> |                                    |           |
| <b>CHAPTER 2</b>                          |           |                                    |           |
| <b>PRICE WINDOW</b>                       |           |                                    |           |
| <b>How To Create a Price Window</b>       | <b>16</b> |                                    |           |
| <b>Settings of the Price Window</b>       | <b>19</b> |                                    |           |
| <b>How To Display Level 2 Data Window</b> | <b>20</b> |                                    |           |

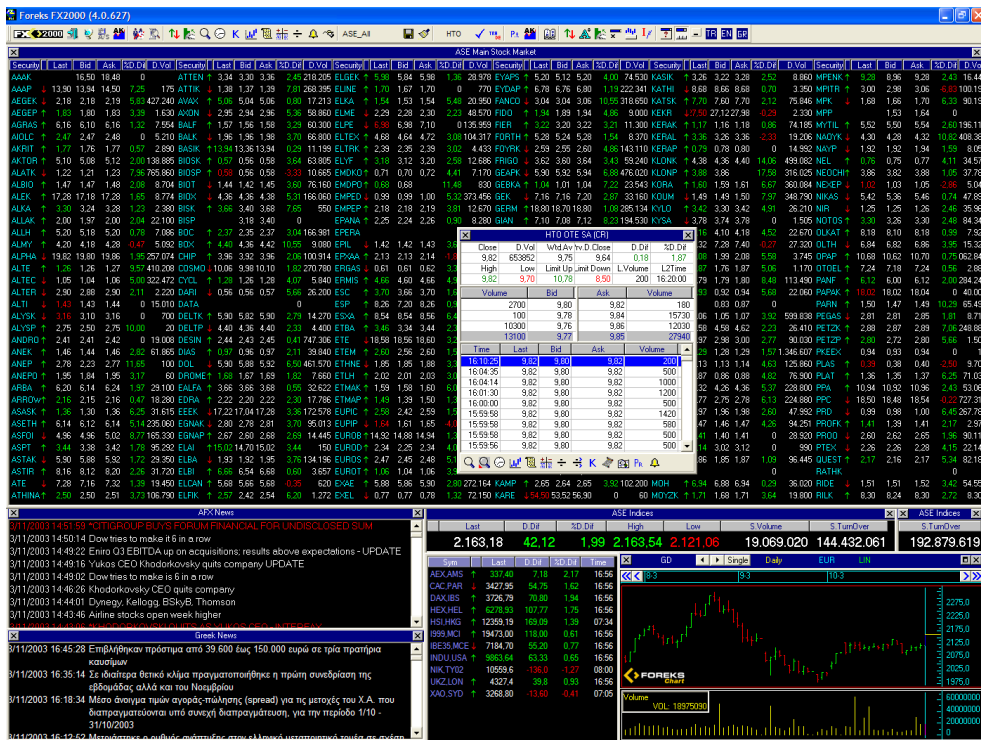
---

# Introduction

## Accessing, Displaying Real-Time Prices

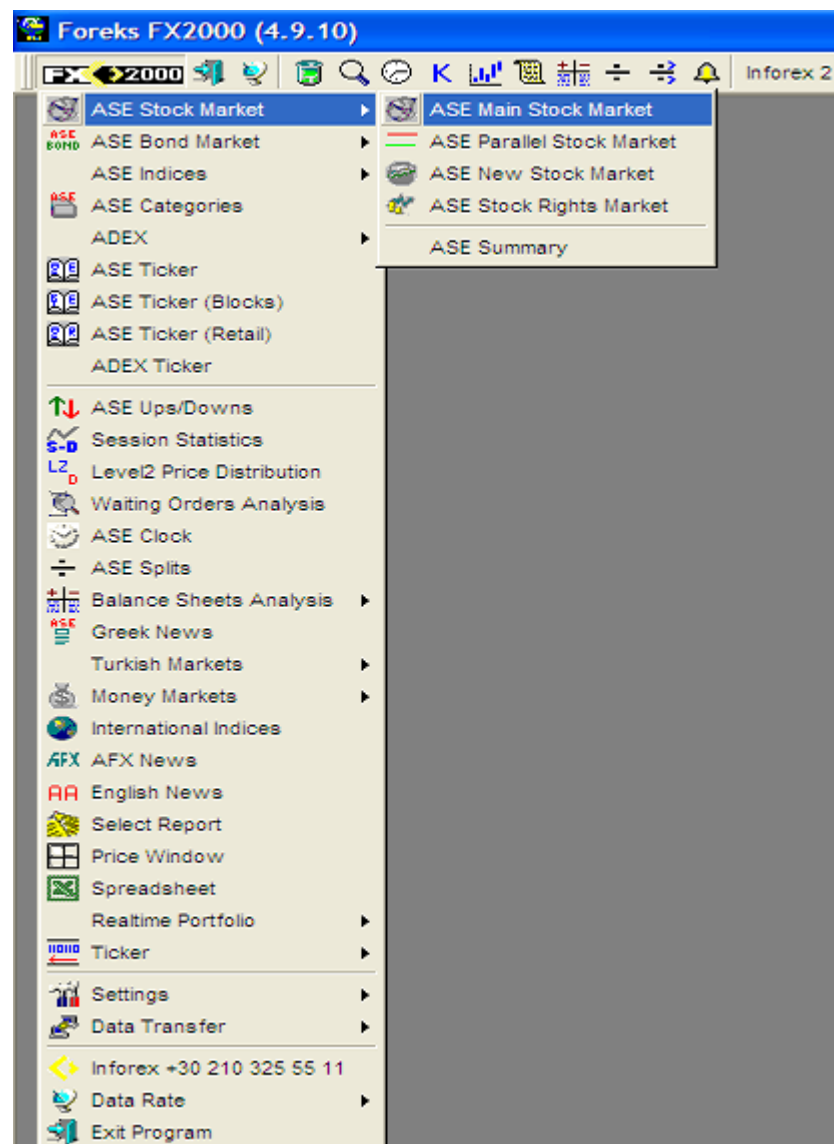
*FX2000 is an easy-to-use and very sophisticated real-time financial information, news displaying and analysis platform which works with digital satellite technology.*

FX2000 displays information on a Layout basis. Layouts are consisted of multiple windows which may be a price window, chart window, news window etc.



## FX2000 Main Menu

FX2000 is managed from the FX2000 Main Menu at the left – topmost corner of the screen. Here, you may find the domestic & international markets categorized and the main functionalities of the system.



**FX2000 QUICK REFERENCE GUIDE**

The system comes with a set of predefined layouts. I.e. if you like to see Athens Stock Exchange Main Market security prices, clicking the ASE Stock Market \ ASE Main Stock Market options from the FX2000 menu will be enough.

| <b>FX2000 Main Menu Option</b> | <b>Function</b>   |
|--------------------------------|---|
| ASE Stock Market               | Displays the price windows for ASE Main, ASE Parallel, ASE New Stock and ASE Stock Rights Markets.  |
| ASE Bond Market                | Displays the price windows for ASE Main Bond and Block Bond Markets.  |
| ASE Indices                    | Displays the price windows for ASE main and sectoral (category) indices. Also securities bound to a certain sectoral indice (category) are displayed separately.                |
| ASE Categories                 | Displays a dialog box in which all the ASE categories are listed. User can select a category from the list and the securities in that category are displayed in a price window. |
| ADEX                           | Displays the ADEX Index/Stock/Stock Future & Option price windows.  |
| ASE Ticker                     | Displays all trades from ASE. The user can filter the trades according to the security, minimum volume and turnover.  |
| ASE Ticker (Blocks)            | Displays all block trades from ASE. The user can filter the block trades according to the security, minimum volume and turnover.  |
| Cyprus Stock Exchanges         | Displays the price windows for CSE Markets.   |
| ADEX Ticker                    | Displays all trades from ADEX   |
| ASE Ups/Downs                  | Displays most traded securities in volume, most gainers and most losers.  |
| Session Statistics             | Displays session statistics window covering the number of securities decreased, increased and stable and the turnover associated.   |
| Level 2 Price Distribution     | Displays all bid and ask volumes at each price distribution, including during pre-session levels  |

|                        |  |
|------------------------|--|
| Waiting Order Analysis | Displays a special analysis generally used a market indicator for ASE securities; all the 3 buying and selling levels of stocks (pending orders) are calculated in volume cumulatively. After potential buying power is compared with potential selling power. |
| ASE Clock              | Displays the latest time stamp received from the ASE.  |
| ASE Splits             | Displays all the splits in detail (capital increases and dividend payments) happened in ASE.   |
| Balance Sheet Analysis | Displays multiple financial statements of a single company for different periods, multiple financial statements of the selected securities for a certain period and selected values from financial statements for a certain period for the selected stocks.    |
| Greek News             | Displays ASE Corporate News and Greek News from sources like Athens News Agency, Euro2day, and Inforex News Center.  |
| Turkish Markets        | Displays all the Turkish Domestic markets.   |
| Money Markets          | Displays the price windows for international currencies and spot rates, LIBOR – EURIBOR rates.   |
| International Indices  | Displays the international indices price window.   |
| AFX News               | Displays DJI News  |
| English News           | Displays Anatolian Agency News in English  |
| Select Report          | Not Used.  |
| Price Window           | Displays an empty price window which can be customized with the securities selected and price fields (columns) added. Price windows can be configured multi-columned.  |
| Spreadsheet Window     | Displays an Excel-like spreadsheet window on which special calculations in real-time can be made.  |
| Real-time Portfolio    | Not Used.  |
| Ticker                 | Displays a ticker window on which the selected securities are scrolled from right to left in the specified period.   |
| Settings               | Main settings related to the operating of the system are gathered here. Technical settings for the data receipt,   |

|               |   |
|---------------|---|
|               | licences, language settings etc. are entered from this option.  |
| Data Transfer | Export & import facilities for data transfer (MetaStock, Advanced Gate, TXT file etc).                    |
| Data Rate     | First option to check if the data receipt stops. Normally, the Successful Packets option should increase. |
| Exit Program  | Exiting the system.   |

## Ready Price windows from the Main Menu

### (i) ASE Main Stock Market

| Security | Last    | Bid   | Ask   | %D.Dif | Close | Security | Last    | Bid   | Ask   | %D.Dif | Close | Security | Last    |         |
|----------|---------|-------|-------|--------|-------|----------|---------|-------|-------|--------|-------|----------|---------|---------|
| AAAK     | 9.68    | 12.10 |       | 0      |       | ALTER    | ↑ 1.84  | 1.82  | 1.85  | -2.13  | 1.84  | VARNH    | ↑ 0.85  |         |
| AAAP     | 9.80    | 11.10 |       | 0      |       | ALTI     |         | 1.32  | 1.32  | 0      |       | VETER    | ↓ 2.33  |         |
| AVAX     | ↑ 4.14  | 4.10  | 4.14  | 0      | 4.12  | ALYSK    |         | 3.00  | 3.00  | 0      |       | BIOSK    | ↓ 0.29  |         |
| BASIK    |         | 13.10 | 13.22 | 0      |       | ALYSP    |         |       |       | 0      |       | BIOSKE   |         |         |
| AGRAS    | ↑ 3.28  | 3.34  | 3.20  | 0.61   | 3.28  | ALPHA    | ↓ 24.04 | 24.04 | 24.06 | -1.80  | 24.06 | BIOSP    | ↓ 0.27  |         |
| AEGEK    | ↓ 0.70  | 0.70  | 0.71  | -1.41  | 0.70  | ANDRO    | ↑ 2.51  | 2.51  | 2.52  | 0      | 2.51  | BIOT     | ↓ 0.99  |         |
| AEGEP    |         | 0.64  | 0.64  | 0      |       | ANEK     | ↓ 1.00  | 1.00  | 1.01  | 0      | 1.01  | BIOX     | ↓ 6.24  |         |
| ATHINA   | ↓ 0.98  | 0.98  | 0.99  | -1.01  | 0.98  | ANEP     |         |       | 1.02  | 0      |       | BISK     |         |         |
| AIDLC    | 2.62    | 2.62  | 2.60  | 0      | 2.62  | ANEPO    | ↓ 0.97  | 0.93  | 0.99  | 0      | 0.97  | BISP     |         |         |
| AKRIT    | ↓ 1.03  | 1.05  | 0.96  | -4.63  | 1.05  | ARBA     | ↑ 5.68  | 5.64  | 5.66  | 0      | 5.66  | BOX      | ↑ 2.32  |         |
| AKTOR    | ↑ 2.93  | 2.92  | 2.93  | 1.03   | 2.93  | ARROW    |         | 2.39  | 2.39  | 2.40   | 0     | 2.39     | VOVDS   | ↑ 11.60 |
| ALATK    | ↑ 0.31  | 0.32  | 0.30  | 3.33   | 0.30  | ASASK    | ↓ 0.63  | 0.63  | 0.64  | -1.56  | 0.63  | GEBKA    | ↓ 0.76  |         |
| ALBIO    |         | 1.30  | 1.33  | 0      |       | ASTAK    | ↓ 5.52  | 5.52  | 5.54  | -0.36  | 5.54  | GEEK     | ↓ 5.02  |         |
| ALEK     | ↑ 12.58 | 12.54 | 12.58 | 4.14   | 12.62 | ASTIR    | ↑ 5.26  | 5.26  | 5.28  | -0.75  | 5.28  | GEAPK    | ↓ 3.54  |         |
| ALLH     | 6.50    | 6.50  |       | 0      | 6.50  | ASPT     | ↑ 2.69  | 2.67  | 2.69  | 0      | 2.69  | GERM     | ↑ 21.60 |         |
| ALKA     |         | 2.79  | 2.94  | 0      |       | ATE      | ↓ 5.84  | 5.80  | 5.84  | 2.10   | 5.92  | GIAN     | ↑ 1.15  |         |
| ALLAK    |         | 1.21  | 1.23  | 0      |       | TATT     | ↑ 4.28  | 4.28  | 4.30  | 0.47   | 4.28  | USYST    | ↓ 1.71  |         |
| ALMY     | ↑ 2.60  | 2.58  | 2.60  | 0.78   | 2.59  | ATTIK    | ↑ 0.50  | 0.49  | 0.50  | -1.96  | 0.49  | GNEF     | ↓ 2.97  |         |
| ALTE     | ↑ 0.31  | 0.31  | 0.28  | 0      | 0.31  | AXON     | ↑ 1.70  | 1.66  | 1.69  | 0      | 1.67  | GOODY    | ↓ 12.98 |         |
| ALTEC    | ↑ 0.43  | 0.42  | 0.43  | 2.38   | 0.42  | BALK     | ↓ 0.63  | 0.63  | 0.64  | 5.00   | 0.63  | TGEN     | ↓ 7.70  |         |

### (ii) ASE Summary Bar

| Index  | Last       | %D.Dif | High     | Low      | S.Volume   | S.TurnOver | DTCTotalTurnOver |
|--------|------------|--------|----------|----------|------------|------------|------------------|
| ASEXCH | ↑ 2,584.65 | -0.67  | 2,603.61 | 2,583.84 | 12,050,176 | 56,378,613 | 8,873,601        |

### (iii) ASE Indices



| Index   | Last     | %D.Dif | High     | Low      | S.Volume  | S.TurnOver |
|---------|----------|--------|----------|----------|-----------|------------|
| ASEXCH  | 2,583.38 | -0.72  | 2,603.61 | 2,583.38 | 2,291,103 | 57,794,270 |
| FTSE ↓  | 1,428.87 | -1.07  | 1,443.55 | 1,428.87 | 3,908,315 | 39,964,322 |
| FTSEA ↓ | 3,024.76 | -0.90  | 3,052.59 | 3,024.76 | 9,052,181 | 51,927,063 |
| FTSEM ↑ | 2,130.18 | -0.26  | 2,143.00 | 2,128.08 | 1,659,111 | 6,566,774  |
| FTSES ↓ | 465.15   | 0.03   | 467.40   | 463.31   | 3,482,951 | 5,387,697  |
| GD ↓    | 2,583.38 | -0.72  | 2,603.61 | 2,583.38 | 6,331,226 | 46,452,963 |
| DAS     | 550.87   | -1.20  | 557.55   | 549.32   | 12,553    | 33,358     |
| DAP     | 619.06   | -1.05  | 628.21   | 619.06   | 47,570    | 396,041    |
| DBM ↑   | 1,202.09 | -0.12  | 1,204.86 | 1,197.56 | 1,688,820 | 6,247,482  |
| DDL     | 1,245.31 | -0.41  | 1,252.95 | 1,239.94 | 75,754    | 633,578    |
| DEK ↑   | 354.78   | -0.69  | 359.21   | 352.21   | 195,288   | 647,555    |
| DEL     | 207.62   | -0.12  | 210.31   | 206.98   | 61,300    | 91,634     |
| DEP     | 873.18   | -0.63  | 880.82   | 873.18   | 685,848   | 1,675,386  |
| DKL ↓   | 193.12   | -0.64  | 194.48   | 192.41   | 82,760    | 119,857    |
| DKT     | 586.24   | -0.30  | 592.81   | 585.29   | 1,050,006 | 784,844    |
| DLE     | 990.57   | 0.33   | 995.42   | 983.58   | 312,876   | 1,295,752  |
| DMT     | 424.80   | 0.32   | 426.91   | 423.87   | 193,554   | 1,162,076  |
| DOT     | 895.50   | -0.34  | 901.98   | 891.74   | 281,318   | 1,255,352  |
| DSM     | 1,338.00 | -0.20  | 1,345.76 | 1,335.39 | 1,684,682 | 3,404,672  |
| DTL     | 1,011.10 | -1.24  | 1,022.98 | 1,010.80 | 1,697,792 | 11,236,248 |
| DTR ↓   | 5,562.52 | -1.72  | 5,649.41 | 5,562.52 | 908,815   | 18,452,906 |
| DTP     | 404.76   | 0.38   | 405.97   | 402.43   | 55,470    | 158,744    |
| DYKT ↑  | 382.66   | 0.44   | 383.60   | 379.80   | 1,252,810 | 1,523,427  |
| DXE ↑   | 486.99   | -0.01  | 489.69   | 485.09   | 215,228   | 741,615    |
| DPL     | 379.38   | -1.59  | 385.00   | 378.50   | 310,600   | 564,386    |
| DPR ↑   | 130.94   | -0.24  | 131.34   | 130.54   | 1,484,414 | 3,191,186  |
| SAGD ↓  | 2,928.76 | -0.72  | 2,951.69 | 2,928.76 | 6,341,896 | 46,542,078 |

## How to Call a Pre-defined Layout?

Layouts are called from the Main Toolbar.



To open a pre-defined layout,


- press the Saved Layouts button (shown in red rectangular area) and a dialog box in which the pre-defined layouts are listed.
- Double-click on the layout you would like to load to the screen.

## **How to Save / Delete / Rename a Layout ?**

After preparing a layout which contains multiple windows, to save this layout for the first time,

- Display the sub-menu of any window and select File \ Save Layout As.
- Enter a name for your layout and press OK.

If you made a change in one of your existing layouts, to save the layout in the same name,

- Press the Save Layout button  in the Main Toolbar or,
- Display the sub-menu of any window and select File \ Save Layout.

To rename the layout,

- Display the sub-menu of any window and select File \ Rename Layout As.

To clear all the windows in the screen and create a new layout,

- Display the sub-menu of any window and select File \ New Layout or File \ Clear Layout.

## ASE Ticker

ASE Ticker window is called from FX2000 Menu. It displays all the trades for all stocks listed in ASE.

The screenshot shows the ASE Ticker window with a table of trade data. The table has columns for No, Time, Security, Price, Difference, Volume, TurnOver, and A/B. The data is color-coded: green for ask trades and red for bid trades. A context menu is open over the table, listing various options such as 'Free Form', 'Columns', 'Select Security', 'Min. Volume >= 0', 'Color (Ask/Bid)', 'Remove Filter', 'Hide Title Bar', 'Group Digits', 'Colour', 'Font', 'Horizontal Grid Lines', 'Vertical Grid Lines', 'Movable', 'Set as Default', 'Delete Default File', 'Print', and 'Close'.

| No   | Time     | Security | Price | Difference | Volume | TurnOver | A/B |
|------|----------|----------|-------|------------|--------|----------|-----|
| 9470 | 11:49:42 | INTRK    |       |            |        | 69       | Bid |
| 9469 | 11:49:40 | DIFF     |       |            |        | 220      | Ask |
| 9468 | 11:49:40 | DIFF     |       |            |        | 436      | Ask |
| 9467 | 11:49:40 | INTRK    |       |            |        | 149      | Bid |
| 9466 | 11:49:40 | INTRK    |       |            |        | 311      | Bid |
| 9465 | 11:49:40 | ALPHA    | 24    |            |        | 967      | Ask |
| 9464 | 11:49:40 | ALPHA    | 24    |            |        | 045      | Ask |
| 9463 | 11:49:40 | ALPHA    | 24    |            |        | 451      | Ask |
| 9462 | 11:49:40 | ATE      | 5     |            |        | 938      | Ask |
| 9461 | 11:49:40 | ATE      | 5     |            |        | 524      | Ask |
| 9460 | 11:49:40 | ATE      | 5     |            |        | 465      | Ask |
| 9459 | 11:49:40 | ATE      | 5     |            |        | 645      | Ask |
| 9458 | 11:49:40 | ATE      | 5     |            |        | 672      | Ask |
| 9457 | 11:49:38 | KOTSV    | 8     |            |        | 650      | Bid |
| 9456 | 11:49:38 | EUROB    | 21    |            |        | 375      | Ask |
| 9455 | 11:49:38 | EUROB    | 21    |            |        | 375      | Ask |
| 9454 | 11:49:36 | ANEK     | 1     |            |        | 102      | Ask |
| 9453 | 11:49:34 | ALTEC    | 0     |            |        | 63       | Bid |
| 9452 | 11:49:33 | DIFF     | 7     |            |        | 109      | Bid |
| 9451 | 11:49:33 | HRAK     | 8     |            |        | 310      | Ask |
| 9450 | 11:49:33 | ETE      | 23    |            |        | 116      | Bid |
| 9449 | 11:49:32 | ASTIR    | 5     |            |        | 360      | Ask |
| 9448 | 11:49:31 | BOC      | 2     |            |        | 870      | Ask |
| 9447 | 11:49:31 | BOC      | 2     |            |        | 870      | Ask |
| 9446 | 11:49:31 | BAL      | 2     |            |        | 291      | Bid |
| 9445 | 11:49:31 | INTRK    | 3     |            |        | 35       | Ask |
| 9444 | 11:49:29 | ELAI     | 17    |            |        | 174      | Ask |
| 9443 | 11:49:29 | ELAI     | 17    |            |        | 174      | Ask |
| 9442 | 11:49:27 | KLONK    | 7     |            |        | 570      | Bid |
| 9441 | 11:49:27 | KLONK    | 7     |            |        | 376      | Bid |
| 9440 | 11:49:26 | BETAN    | 3     |            |        | 346      | Ask |
| 9439 | 11:49:26 | BETAN    | 3     |            |        | 344      | Ask |
| 9438 | 11:49:24 | HYATT    | 8     |            |        | 657      | Ask |
| 9437 | 11:49:24 | HYATT    | 8     |            |        | 831      | Ask |
| 9436 | 11:49:24 | ALPHA    | 24    |            |        | 325      | Bid |

The Time, Security, Trade Price, %Daily Difference, Trade Volume, Turnover in Euro and if the trade is from bid or ask fields are displayed.

Rows can be colored depending on, if the trade is from the bid price / ask price, if the trade price is higher / lower than previous trade price or if the trade price is

higher / lower than yesterday's closing price. Higher prices are highlighted green, lowers are highlighted red.

Trades can be filtered according to the security, minimum Volume or minimum Turnover.

As the general functionality of the system, the data on the window can be exported to other programs in Excel or text format.

Retail trades can be displayed by selecting ASE Ticker (Retail) and block trades can be displayed by selecting ASE Ticker (Blocks) from the FX2000 menu.

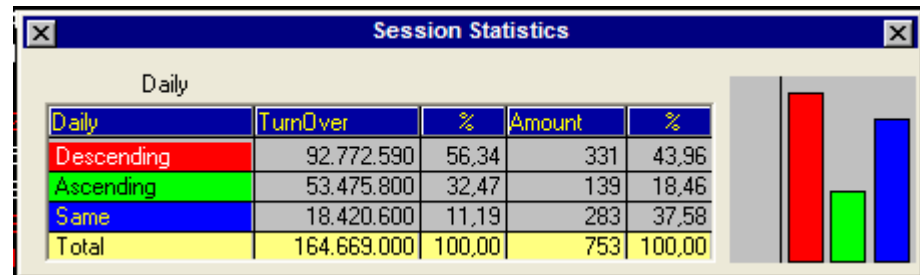
## ASE Ups & Downs Window

This windows displays the top gainers and losers in ASE.

| Traded Value |             |        | Ups      |        |        | Downs    |      |        |
|--------------|-------------|--------|----------|--------|--------|----------|------|--------|
| Security     | TurnOver    | %      | Security | Last   | %      | Security | Last | %      |
| Total        | 164.668.848 | 100,00 | AONUA    | 14,44  | 581,13 | AEOA     | 1,19 | -92,81 |
| EUROB        | 12.995.199  | 7,89   | AEE      | 449,14 | 458,98 | DAOI     | 0,42 | -10,64 |
| ETE          | 12.039.384  | 7,31   | AAIAE    | 6,36   | 121,60 | KORFP    | 1,66 | -9,78  |
| ALPHA        | 11.203.666  | 6,80   | EEAI     | 5,06   | 15,00  | AEIOG    | 0,28 | -9,68  |
| QPAP         | 10.543.764  | 6,40   | QEAN     |        |        |          | 0,47 | -9,62  |
| HTO          | 8.022.657   | 4,87   | ANIIA    |        |        |          | 0,47 | -7,84  |
| EEEEK        | 7.395.398   | 4,49   | QANAI    |        |        |          | 3,16 | -7,06  |
| PPC          | 5.794.843   | 3,52   | EMDPO    |        |        |          | 2,51 | -6,69  |
| COSMO        | 5.589.482   | 3,39   | EAIAA    |        |        |          | 2,01 | -6,51  |
| NAFT         | 4.570.385   | 2,78   | QAEEA    |        |        |          | 3,58 | -6,28  |
| EXAE         | 2.916.902   | 1,77   | QAOIE    |        |        |          | 3,00 | -6,25  |
| INTRK        | 2.290.853   | 1,39   | TEXN     |        |        |          | 3,36 | -5,62  |
| AEDA         | 2.228.683   | 1,35   | QAEAI    |        |        |          | 0,51 | -5,56  |
| IDA          | 2.115.294   | 1,28   | QAEEI    |        |        |          | 1,79 | -5,29  |
| EIOEA        | 1.569.834   | 0,95   | IGOEI    |        |        |          | 1,47 | -5,16  |
| AIOA         | 1.523.948   | 0,93   | AA?      |        |        |          | 1,66 | -5,14  |
| AOA          | 1.435.637   | 0,87   | GEAO     |        |        |          | 4,06 | -5,14  |
| PAPAK        | 1.384.522   | 0,84   | EOIGA    |        |        |          | 0,98 | -4,85  |
| DOL          | 1.316.303   | 0,80   | GCAAO    |        |        |          | 2,41 | -4,74  |
| PARN         | 1.274.727   | 0,77   | QAEI     |        |        |          | 1,23 | -4,65  |
| VOVOS        | 1.196.113   | 0,73   | AONUD    |        |        |          | 8,68 | -4,62  |
| AAAE         | 1.058.749   | 0,64   | G0000    |        |        |          | 1,27 | -4,51  |
| ELPE         | 1.028.830   | 0,62   | EEOEI    |        |        |          | 1,06 | -4,50  |
| FOLLI        | 1.000.709   | 0,61   | EAON     |        |        |          | 8,94 | -4,49  |
| PANF         | 908.291     | 0,55   | EANA     | 3,46   | 4,85   | DROME    | 1,50 | -4,46  |
| GEAPK        | 860.622     | 0,52   | EEAAI    | 3,98   | 4,74   | LODIS    | 0,86 | -4,44  |
| AIE          | 858.080     | 0,52   | IC?E     | 3,10   | 4,73   | PLAS     | 0,43 | -4,44  |
| INFOM        | 856.768     | 0,52   | QAEIE    | 1,58   | 4,64   | ELBA     | 1,95 | -4,41  |
| VETER        | 849.802     | 0,52   | PETRO    | 5,90   | 4,24   | XYLEK    | 4,78 | -4,40  |

## Session Statistics

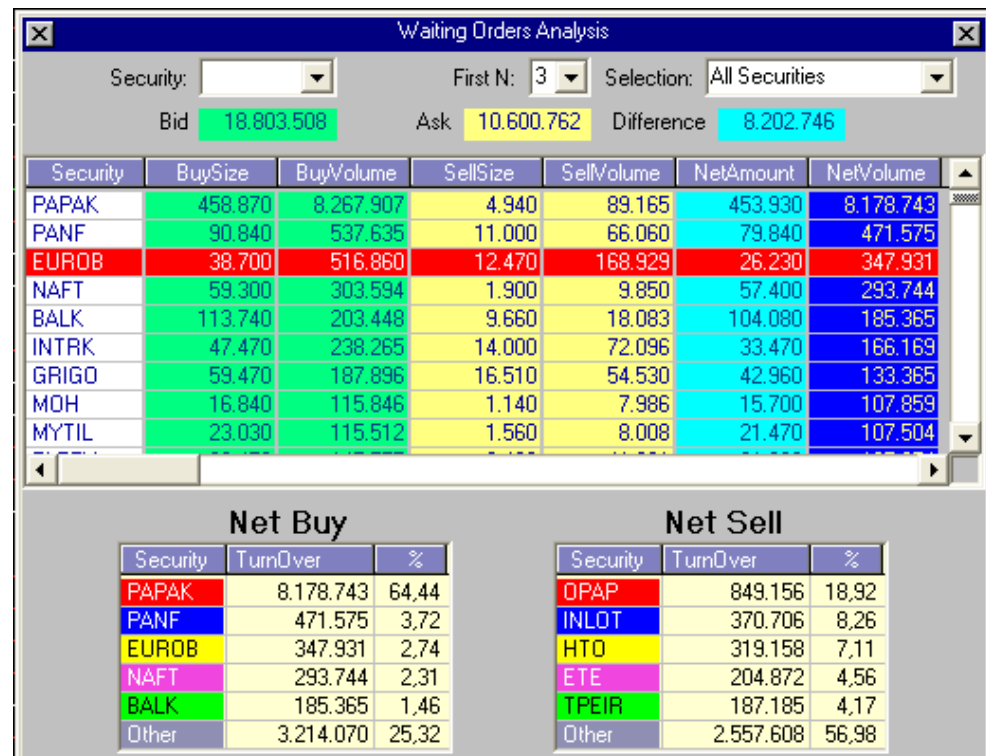
This window displays the number and turnover of increasing / decreasing / remaining same securities with a pie chart. It is used mostly as a general market indicator.



## Waiting Order Analysis

This property is a unique functionality of FX2000. The window displays the buying and selling power of securities individually in one table in terms of lots and turnover. The values are comparable with each other, therefore it is very to determine at first sight which security has a buying or selling pressure.

Also, the total sum of buying orders and selling orders are calculated. From these two indicators a Net Sum is calculated which is used as a general market indicator for determining the market direction.



## ASE Splits

ASE stock splits are displayed in these window historically.

| Splits   |            |        |            |           |        |             |        |          |
|----------|------------|--------|------------|-----------|--------|-------------|--------|----------|
| Security | Exp. Date  | Split  | Pay Date   | Div. Type | Split  | NumOfShares | AdjDiv | NumOfSha |
| IASO     | 26/06/2002 | 0,0000 | 04/07/2002 |           | 1,0400 | 90.462.000  | 0,6800 | 0        |
| ELATH    | 18/12/2002 | 0,0000 |            | Dividend  | 0,1000 | 17.250.000  | 0,1000 | 0        |
| HSI      | 09/12/2002 | 0,0000 | 16/12/2002 | Dividend  | 0,1300 | 30.819.932  | 0,1300 | 0        |
| SFA      | 31/12/1995 | 0,0000 |            | Dividend  | 0,1673 | 8.000.000   | 0,1287 | 0        |
| BABY     | 15/11/2002 | 0,0000 |            | Dividend  | 0,1000 | 45.619.200  | 0,1000 | 0        |
| POUL     | 02/01/1996 | 0,0000 | 02/01/1996 | Dividend  | 0,1702 | 5.000.000   | 0,0390 | 0        |
| PANF     | 27/09/2002 | 0,0000 | 29/10/2002 | Dividend  | 0,1100 | 543.313.984 | 0,1100 | 0        |
| YALCO    | 16/09/2002 | 0,0000 | 23/09/2002 | Dividend  | 0,0500 | 13.191.620  | 0,0500 | 0        |
| PLAT     | 21/08/2002 | 0,0000 | 27/08/2002 | Dividend  | 0,0200 | 45.500.000  | 0,0200 | 0        |
| FOLLI    | 20/08/2002 | 0,0000 | 26/08/2002 | Dividend  | 0,1200 | 32.946.876  | 0,1200 | 0        |
| CONE     | 19/08/2002 | 0,0000 | 26/08/2002 | Dividend  | 0,0200 | 17.100.000  | 0,0200 | 0        |
| XYLEK    | 14/08/2002 | 0,0000 | 26/08/2002 | Dividend  | 0,0200 | 1.942.360   | 0,0200 | 0        |
| XYLEP    | 14/08/2002 | 0,0000 | 26/08/2002 | Dividend  | 0,1400 | 597.800     | 0,1400 | 0        |
| LEBEP    | 09/08/2002 | 0,0000 | 19/08/2002 | Dividend  | 0,0280 | 2.199.514   | 0,0280 | 0        |
| ELBE     | 09/08/2002 | 0,0000 | 20/08/2002 | Dividend  | 0,0350 | 13.230.000  | 0,0350 | 0        |
| KMOL     | 08/08/2002 | 0,0000 | 28/08/2002 | Dividend  | 0,0160 | 9.742.920   | 0,0160 | 0        |
| GEBKA    | 06/08/2002 | 0,0000 | 20/08/2002 | Dividend  | 0,0600 | 24.060.000  | 0,0600 | 0        |
| ELME     | 05/08/2002 | 0,0000 | 28/08/2002 | Dividend  | 0,0498 | 55.400.000  | 0,0498 | 0        |
| SEAF     | 05/08/2002 | 0,0000 | 28/08/2002 | Dividend  | 0,0200 | 42.768.000  | 0,0200 | 0        |
| ELTRK    | 05/08/2002 | 0,0000 | 08/08/2002 | Dividend  | 0,0900 | 11.070.000  | 0,0692 | 0        |

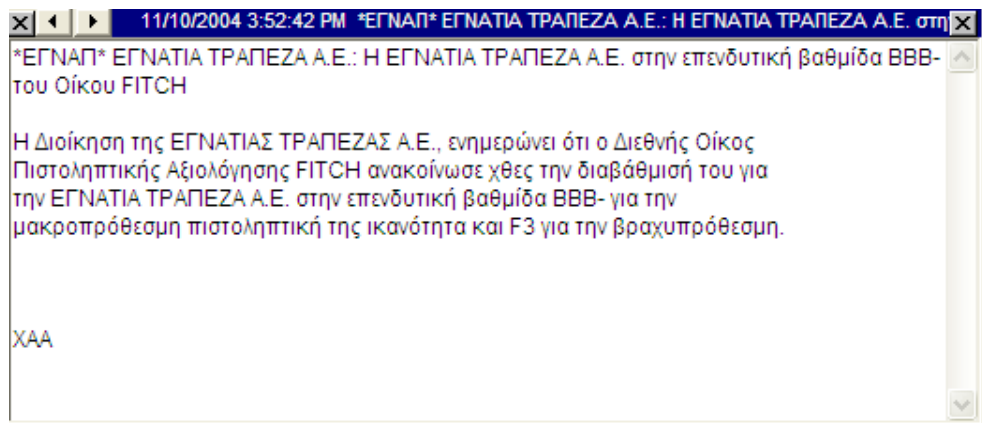
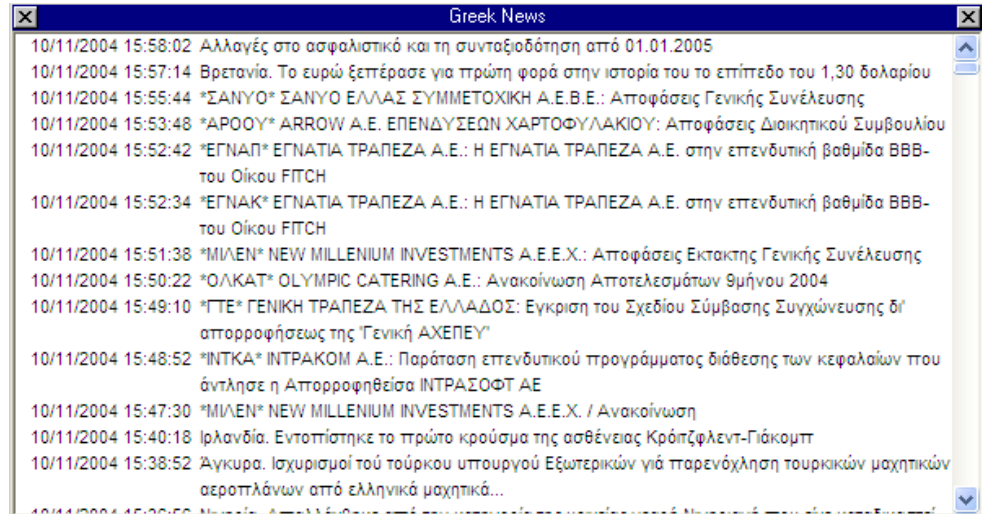
## Balance Sheet Analysis

ASE stock splits are displayed in these window historically.

|  | A | B |
|--|---|---|
| <b>Financial Statement</b>                               |   |   |
| <b>I. CURRENT ASSETS</b>                                 |   |   |
| <b>A. LIQUID ASSETS</b>                                  |   |   |
| 1. Cash  |   |   |
| 2. Banks   |   |   |
| 3. Other liquid assets                                   |   |   |
| <b>B. MARKETABLE SECURITIES</b>                          |   |   |
| 1. Share stocks  |   |   |
| 2. Private sector bills, notes and bonds                 |   |   |
| 3. Government bonds and Treasury bills                   |   |   |
| 4. Other marketable securities                           |   |   |
| 5. Provision for diminution in value of marketable secur |   |   |
| <b>C. SHORT-TERM TRADE RECEIVABLES</b>                   |   |   |
| 1. Customers   |   |   |
| 2. Notes receivable                                      |   |   |
| 3. Deposits and guarantes given                          |   |   |
| 4. Other short-term trade receivables                    |   |   |
| 5. Rediscount of notes receivable (-)                    |   |   |
| 6. Provision for doubtful receivables (-)                |   |   |
| <b>D. OTHER SHORT-TERM TRADE RECEIVABLES</b>             |   |   |
| 1. Due from shareholders                                 |   |   |
| 2. Due from investments                                  |   |   |
| 3. Due from subsidiaries                                 |   |   |
| 4. Other short-term receivables                          |   |   |
| 5. Rediscount of notes receivable (-)                    |   |   |
| 6. Provision for doubtful receivables (-)                |   |   |
| <b>E. INVENTORIES</b>                                    |   |   |

## Greek News

Local Greek News are displayed in the following window. If you double click on any news headline, you would get the full story.





**FX2000 QUICK REFERENCE GUIDE**

When there is a related news for a specific stock each day, then the stock symbol is highlighted that day in the price window.

| ASE Main Stock Market |         |       |       |        |       |          |         |       |       |        |       |          |   |
|-----------------------|---------|-------|-------|--------|-------|----------|---------|-------|-------|--------|-------|----------|---|
| Security              | Last    | Bid   | Ask   | %D.Dif | Close | Security | Last    | Bid   | Ask   | %D.Dif | Close | Security |   |
| BIOX                  | 6.28    | 6.26  | 6.28  | 0.64   | 6.28  | DARIE    |         |       |       | 0      |       | EDRA     | ↑ |
| BISK                  | ↑ 2.44  | 2.34  | 2.45  | 1.67   | 2.44  | PPC      | ↑ 19.58 | 19.56 | 19.60 | 0.51   | 19.58 | ASETH    | ↑ |
| BISP                  | 2.48    | 2.20  | 2.47  | 0      | 2.48  | DESIN    | ↑ 2.37  | 2.35  | 2.37  | 0.85   | 2.37  | EEEK     | ↑ |
| BOX                   | ↑ 2.31  | 2.30  | 2.33  | 0      | 2.31  | DIAS     | 1.03    | 1.03  | 1.04  | 0      | 1.03  | ETHNE    | ↓ |
| VOVOS                 | ↓ 11.68 | 11.60 | 11.72 | 1.57   | 11.68 | DIASE    |         |       |       | 0      |       | ELINE    |   |
| GEBKA                 | ↓ 0.76  | 0.75  | 0.77  | -1.30  | 0.76  | DELTK    | 5.64    | 5.52  | 5.64  | 5.22   | 5.64  | ELAI     | ↑ |
| GEK                   | 5.22    | 5.20  | 5.22  | 3.16   | 5.22  | DOL      | ↑ 3.40  | 3.38  | 3.42  | 1.80   | 3.40  | ELCAN    | ↑ |
| GEAPK                 | ↓ 3.70  | 3.70  | 3.74  | 5.71   | 3.70  | DOLE     |         |       |       | 0      |       | ELBA     | ↑ |
| GERM                  | ↑ 21.18 | 21.14 | 21.16 | -2.40  | 21.18 | DROME    | ↓ 1.47  | 1.46  | 1.48  | -2.00  | 1.47  | ELGEK    | ↑ |
| GIAN                  | ↓ 1.11  | 1.11  | 1.13  | -0.89  | 1.11  | DELTP    | ↑ 4.08  | 4.04  | 4.08  | 2.51   | 4.08  | EPXDA    | ↑ |
| USYST                 | ↓ 1.71  | 1.71  | 1.73  | -1.16  | 1.71  | HSI      | ↑ 4.04  | 4.00  | 4.02  | 0.50   | 4.04  | ELIN     | ↑ |
| GNEF                  | ↓ 2.99  | 2.99  | 3.00  | -0.33  | 2.99  | HSIE     |         |       |       | 0      |       | ELKA     | ↑ |
| GOODY                 | ↑ 13.20 | 13.00 | 13.20 | 1.69   | 13.20 | EGNAK    | ↓ 2.70  | 2.70  | 2.72  | 0.37   | 2.70  | TELL     |   |
| TGEN                  | ↓ 7.56  | 7.52  | 7.58  | -1.05  | 7.56  | EGNAKE   |         |       |       | 0      |       | ELME     |   |
| DARI                  | ↓ 0.18  | 0.18  | 0.19  | -5.26  | 0.18  | EGNAP    | ↑ 2.26  | 2.22  | 2.26  | 1.80   | 2.26  | ELBI     | ↑ |

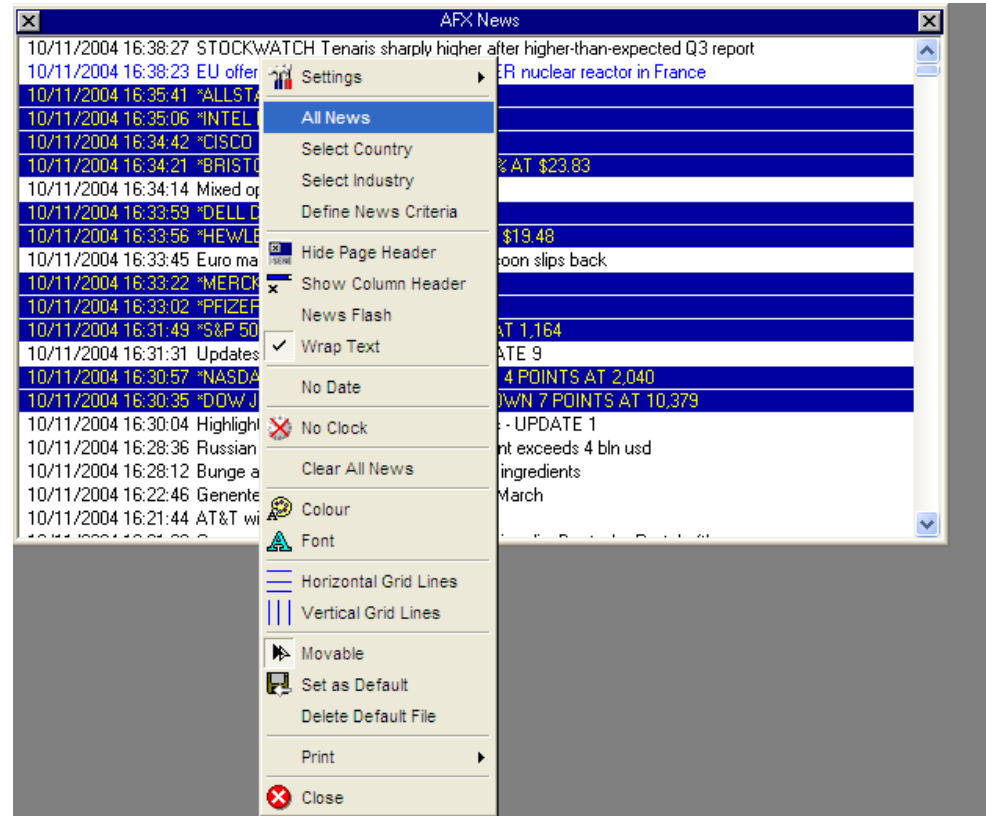
Either with a right click or F6 button, you can reach all the related news of that stock. Once you read the related news, the highlight on the stock disappears.

| News: Security [ EGNAK, EGNATIA BANK SA (CR) ] |   |
|--|---|
| 10/11/2004 15:52:34                            | *EGNAK* ΕΓΝΑΤΙΑ ΤΡΑΠΕΖΑ Α.Ε.: Η ΕΓΝΑΤΙΑ ΤΡΑΠΕΖΑ Α.Ε. στην επενδυτική βαθμίδα BBB- του Οίκου FITCH                                     |
| 09/11/2004 16:59:10                            | *EGNAK* Εγνατία Τράπεζα - Συνεργασία με International Life  |
| 09/11/2004 09:18:56                            | *EGNAK* ΕΓΝΑΤΙΑ ΤΡΑΠΕΖΑ Α.Ε. / Εκποίηση μετοχών   |
| 09/11/2004 09:12:14                            | *EGNAK* ΕΓΝΑΤΙΑ ΤΡΑΠΕΖΑ Α.Ε. / Εκποίηση μετοχών   |
| 08/11/2004 18:21:00                            | *EGNAK* ΕΓΝΑΤΙΑ ΤΡΑΠΕΖΑ Α.Ε. / Εκποίηση μετοχών   |
| 08/11/2004 09:45:32                            | *EGNAK* ΕΓΝΑΤΙΑ ΤΡΑΠΕΖΑ Α.Ε. / Ανακοίνωση   |
| 05/11/2004 16:39:32                            | *EGNAK* ΕΓΝΑΤΙΑ ΤΡΑΠΕΖΑ Α.Ε.: Η ΕΓΝΑΤΙΑ LEASING Α.Ε. ΧΡΗΜΑΤΟΔΟΤΙΚΗΣ ΜΙΣΘΩΣΗΣ θα εκδόσει κοινό ομολογιακό δάνειο ποσού ευρώ 40.000.000 |
| 13/10/2004 11:15:58                            | *EGNAK* Νέο έργο e-Banking για την Εγνατία Τράπεζα από την PCS  |
| 24/09/2004 16:49:58                            | *EGNAK* ΕΓΝΑΤΙΑ ΤΡΑΠΕΖΑ Α.Ε./ Ασφαλείς συναλλαγές μέσω Internet   |
| 23/08/2004 15:26:06                            | *EGNAK* ΕΓΝΑΤΙΑ ΤΡΑΠΕΖΑ Α.Ε./ Αποτελέσματα Ομίλου ΕΓΝΑΤΙΑΣ ΤΡΑΠΕΖΑΣ Α' εξάμηνο 2004   |

If some of the headlines are read, then these headlines have a different color to the rest of the headlines. In the above case, you can see that headlines that are already read have grey coloring instead of black.

## AFX News

AFX International News are displayed in the following window. If you double click on any news headline, you would get the full story.



Flash news are highlighted in blue, and as you can see above, you can filter all news according to country, industry or news criteria.

## How to Create a Price Window?

Layouts are mainly consisted of price windows. There are 3 ways to create a price window.

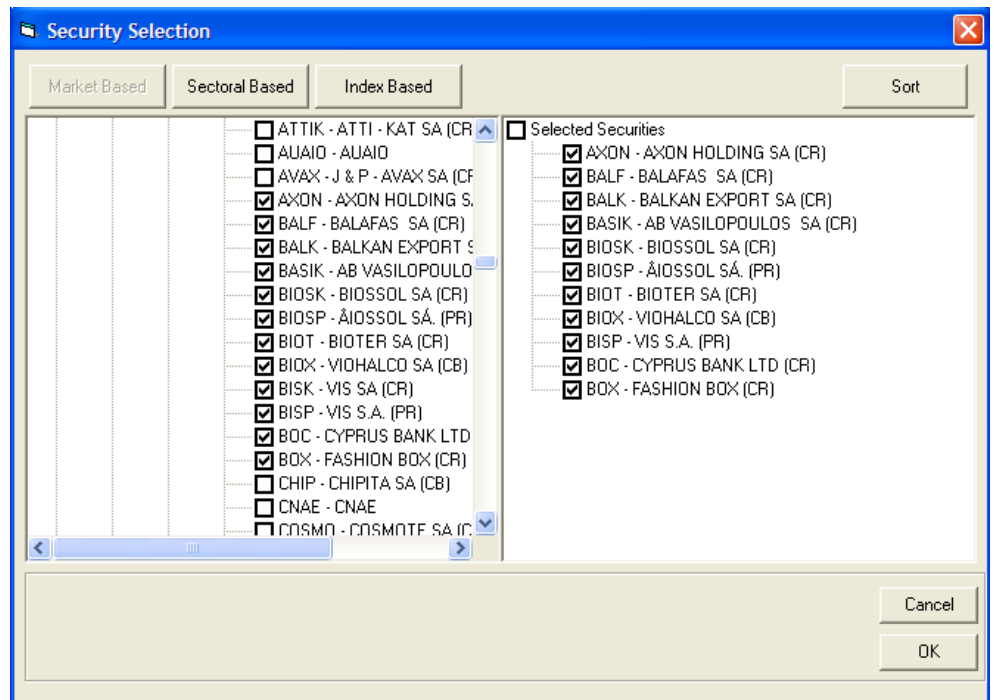
- (i) Copying a pre-defined price window already existing in a different layout
- (ii) Creating a new price window from zero and customizing it
- (iii) Calling a pre-defined market price window from FX2000 menu and customizing it.

(i) To copy a price window that already exists in a layout,

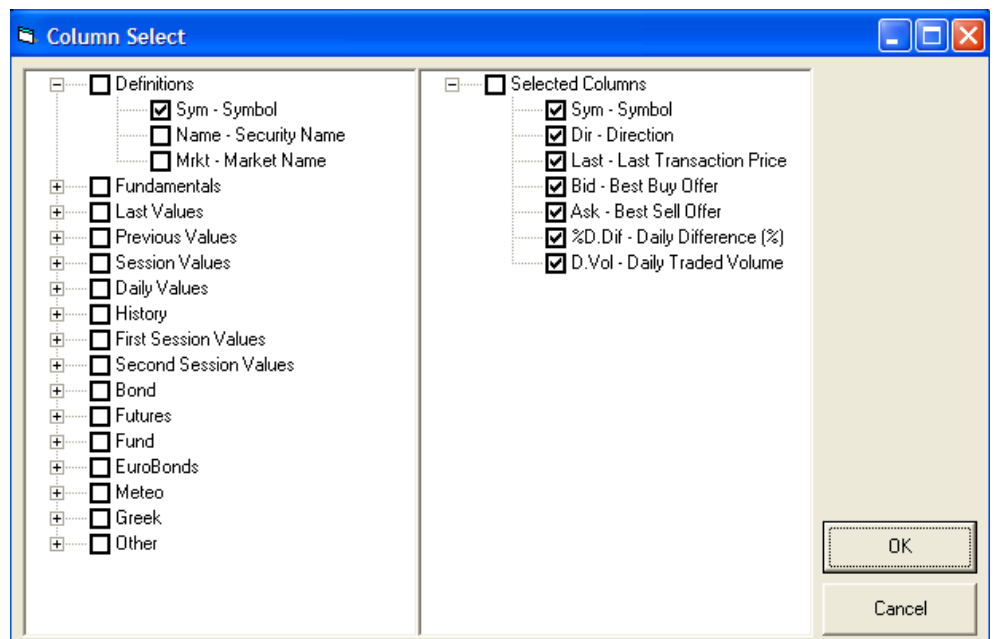
- Right click in the price window you want to copy and select View Settings \ Copy options.
- The window will be copied to the memory. Open the layout that you want to add the copied price window to and again select View Settings \ Paste option from the sub-menu which is displayed by pressing the right button.

(ii) To create a new price window from zero and to customize it,

- Select Price Window option from the FX2000 menu and a default Price Window will be displayed on the screen.



- From the window sub-menu (right click) choose Select Security option to add the securities you want to see in the price window from the dialog box displayed.

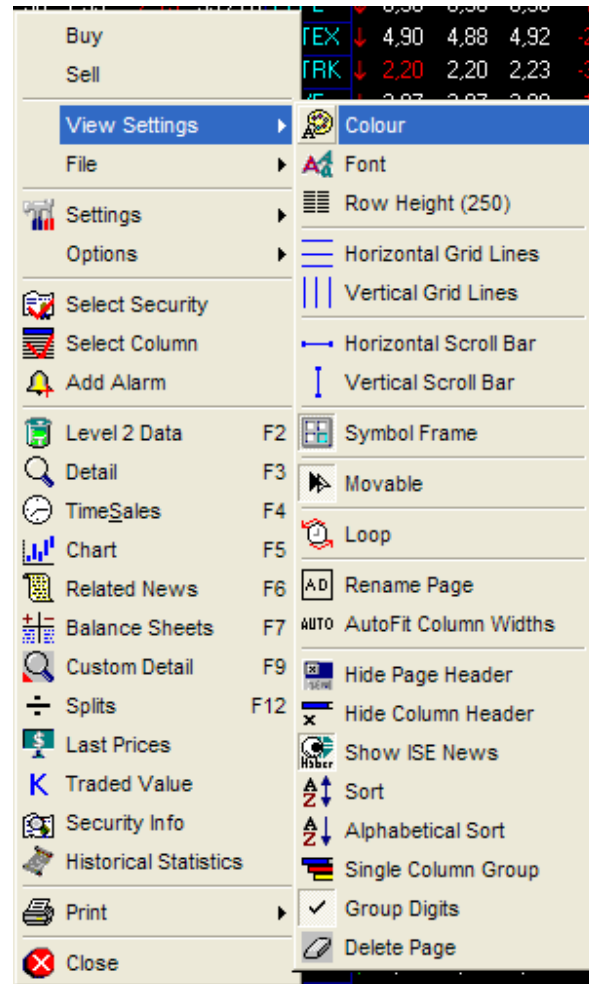


- Choose Select Column option from the sub-menu and a dialog box with the list of available price fields will be displayed. You can add / delete the price fields from here.

## **FX2000 QUICK REFERENCE GUIDE**

- Once the security & column setup of the new price window is finished, you can arrange color, font and multi-column structure of the price window from its sub-menu.
- (iii) To call a pre-defined price window from FX2000 menu and customize it.
- From FX2000 Main Menu, select the pre-defined price window (i.e. to create a price window covering the stocks from ASE, you can display ASE Stock Market \ ASE Main Stock Market on the screen)
  - On the pre-defined price window add / delete the securities and the price fields as mentioned above in 2.

## Settings of the Price Window



The View Settings of a price window covers color and font settings, row height, displaying / removing horizontal / vertical gridlines and scrollbars, displaying rectangular frames for symbol column, setting the price window to be moved with one click if the header of the window is not displayed, displaying the symbols in a periodical loop, auto-fitting the column widths, hiding / displaying window or price field headers, sorting, displaying symbols in a single column or multi columns, and formatting the numbers displayed.

To add / delete a symbol (stock) to or from a price window,

- Select the symbol from the price window simply by clicking on it, to add a new symbol press CTRL+A and enter the symbol from the keyboard.
- To remove symbol, select the symbol and press CTRL+S.

## How to display Level2 Data Window

- Double click on the figures of the symbol or select Level 2 Data option from the sub-menu of the price window.

| Last       | Close    | D.Vol    | Wtd.Av | Prv.D.Close |
|------------|----------|----------|--------|-------------|
| 21.66      | 21.66    | 60902    | 21.70  | 21.86       |
| D.Dif      | %D.Dif   | High     | Low    | Limit Up    |
| -0.20      | -0.91    | 21.80    | 21.50  | 24.48       |
| Limit Down | L.Volume | L2Time   |        |             |
| 19.24      | 20       | 11:35:18 |        |             |





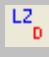
  

| %     | Volume | Bid   | Ask   | Volume | %     |
|-------|--------|-------|-------|--------|-------|
| -1.10 | 130    | 21.62 | 21.68 | 130    | -0.82 |
| -1.19 | 7330   | 21.60 | 21.70 | 2600   | -0.73 |
| -1.28 | 150    | 21.58 | 21.72 | 1460   | -0.64 |
| -1.19 | 7610   | 21.60 | 21.71 | 4190   | -0.70 |






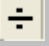
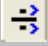



  

| Time     | Last  | Bid   | Ask   | Volume |
|----------|-------|-------|-------|--------|
| 11:35:03 | 21.66 | 21.66 | 21.68 | 20     |
| 11:34:57 | 21.66 | 21.66 | 21.68 | 80     |
| 11:34:34 | 21.70 | 21.62 | 21.66 | 60     |
| 11:34:34 | 21.68 | 21.62 | 21.66 | 100    |
| 11:34:34 | 21.66 | 21.62 | 21.66 | 60     |

From the sub menu of a price window you can display,

| Option   | Function   |
|--|--|
| Level 2 Data   | Calls the Level 2 Data window in which 3 levels of ASE market depth data are displayed. Also selected price fields and all the trades are displayed.                 |
| Show Retail                 | Shows all the retail transactions below  |
| Detail                      | Calls the Detail window in which the daily session statistics of a symbol is displayed.  |
| Custom Detail               | Calls a window in which selected price fields can be displayed.  |
| Traded Value                | Displays Traded Value window in which volumes occurred at price levels are shown. This window is mostly used for determining intraday support and resistance levels. |
| Level 2 Price Distribution  | Shows Level 2 Price distribution   |

**FX2000 QUICK REFERENCE GUIDE**

|   |   |
|---|---|
| Time & Sales           | Displays the Time & Sales window in which all the trades are shown.                 |
| Chart                  | Displays chart for technical analysis.  |
| Intraday Chart         | Displays intraday chart   |
| Related News           | Displays the news related with the stock if there is any.                           |
| Balance Sheet          | Displays financial figures of a security.   |
| Splits                 | Displays splits which occur after a capital increase or a dividend payment.         |
| Future Splits          | Displays future splits that are announced by the company.                           |
| Historical Statistics  | Calls a window in which daily, weekly, monthly and yearly statistics are displayed. |
| Security Info        | Displays a window in which general trading information about the security is shown. |
| Company Profile      | Displays company profile.   |
| Last Prices   | Displays a ticker window in which last trades are shown.                            |

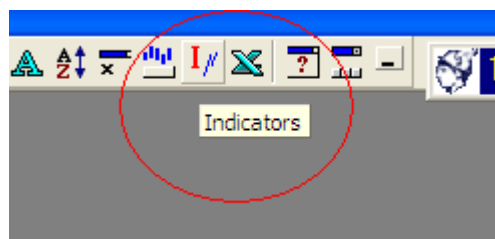


## Technical Analysis

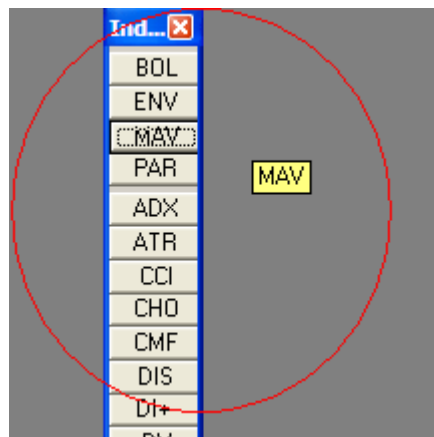


You can customize all technical analysis charts, with your own indicators, moving averages and trend lines, etc. You can either add an indicator with a right click or with the indicator tool bar.

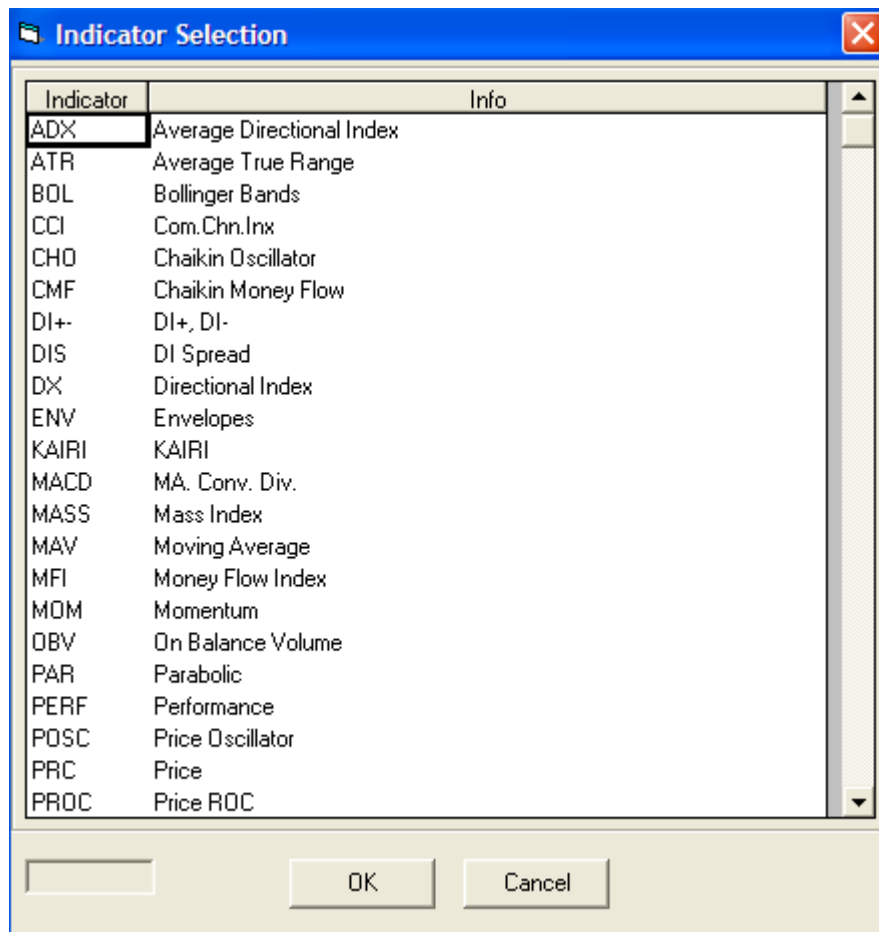
### How to Add an Indicator



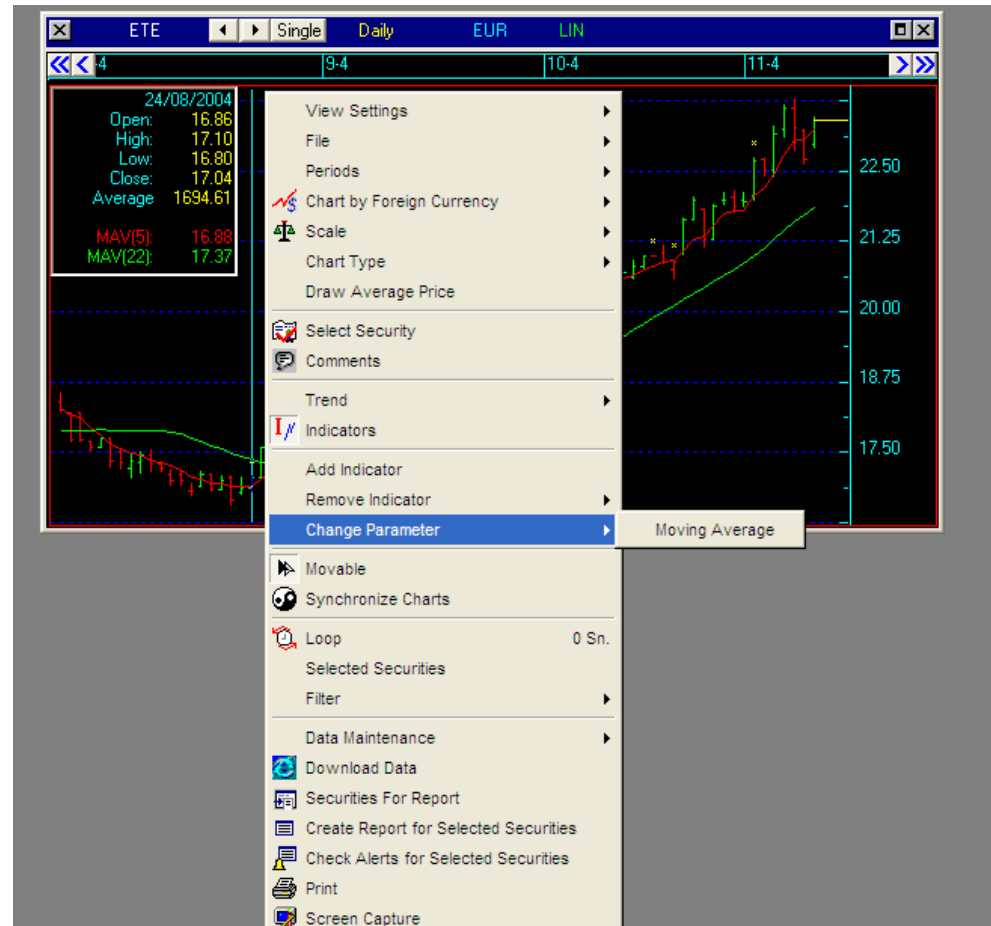
You can access the Indicator tool bar from the Main Tool Bar at the top.



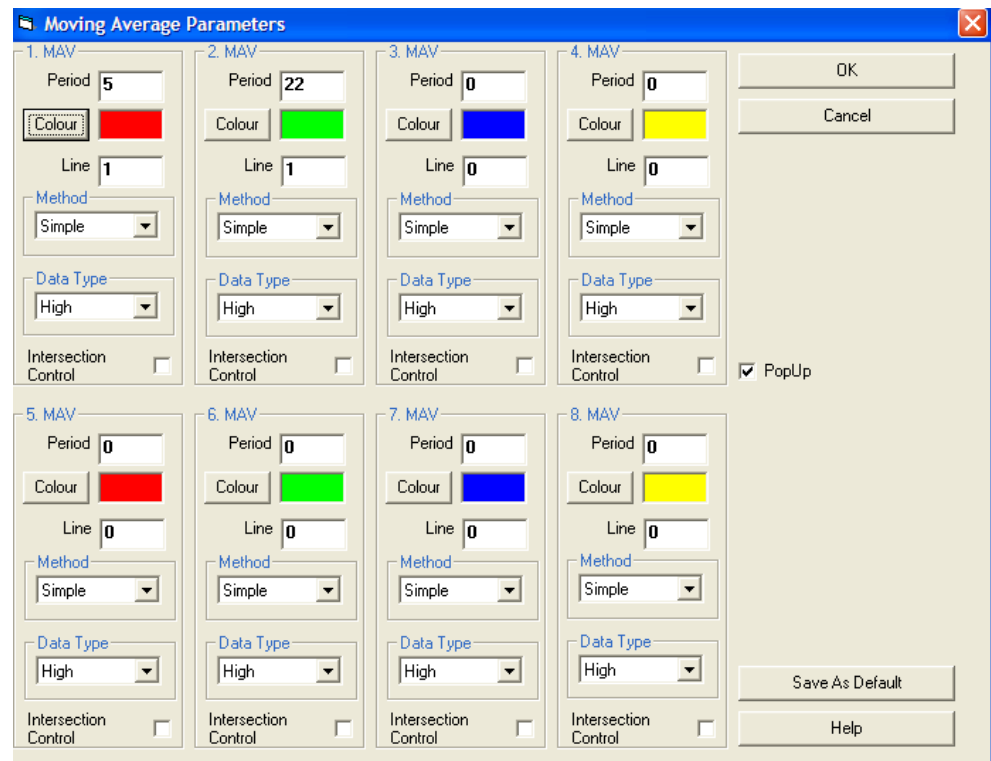
You can drag and drop the indicators from the Indicator tool bar into the technical analysis chart.



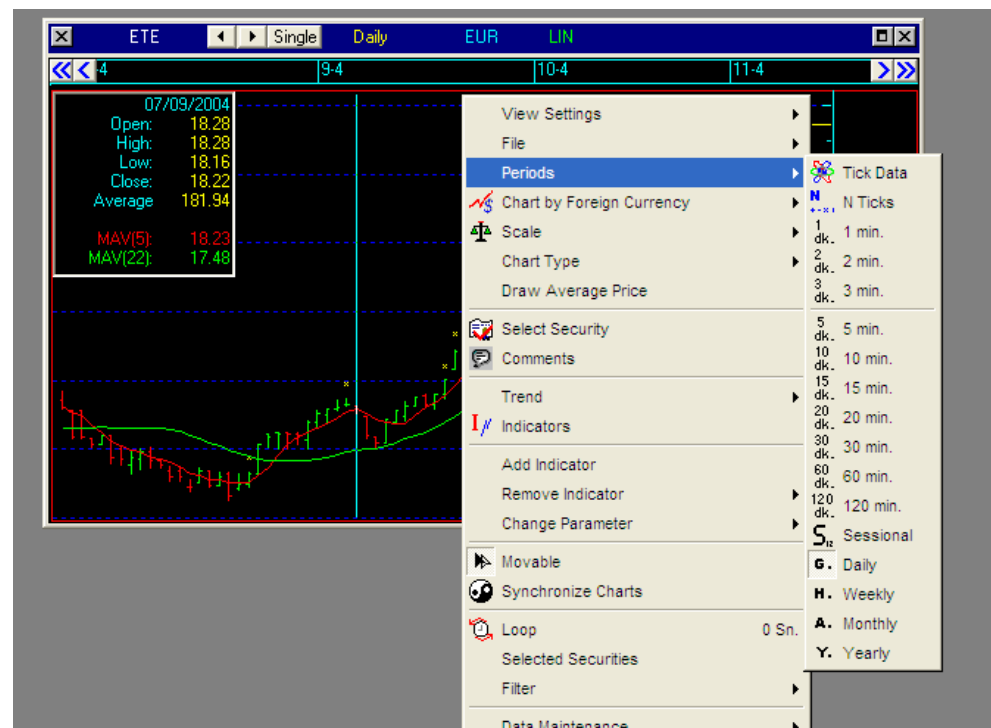
## How to Change Parameters of an Indicator



From Right-Click in Technical Analysis, you can change parameters of the indicators you have previously chosen. You get a window like below, and you can customize the indicator with your own parameters.

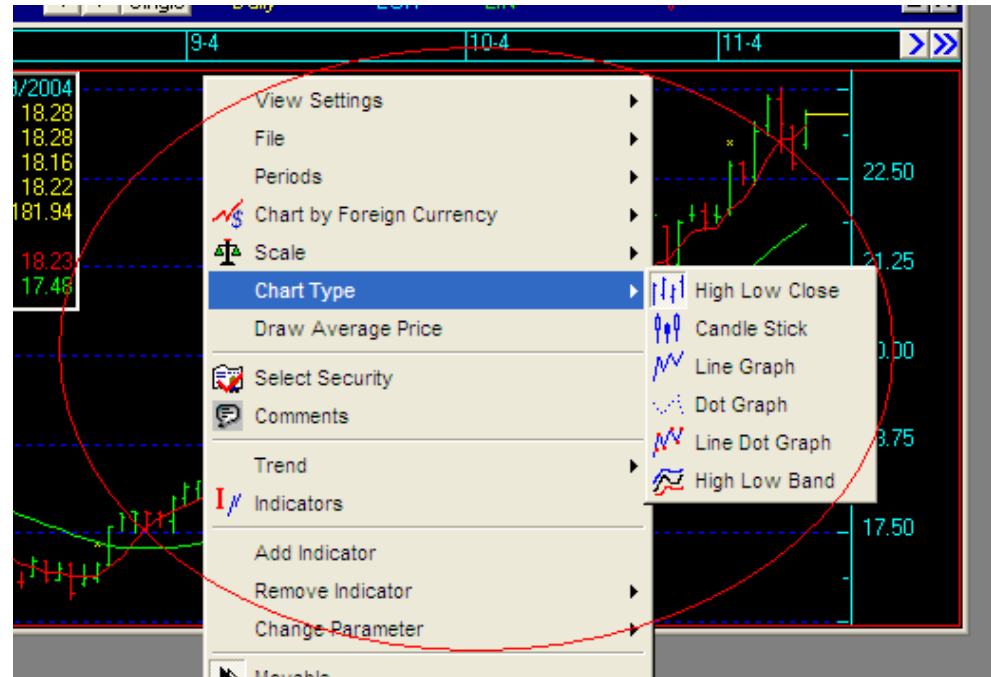


## How to Change Period

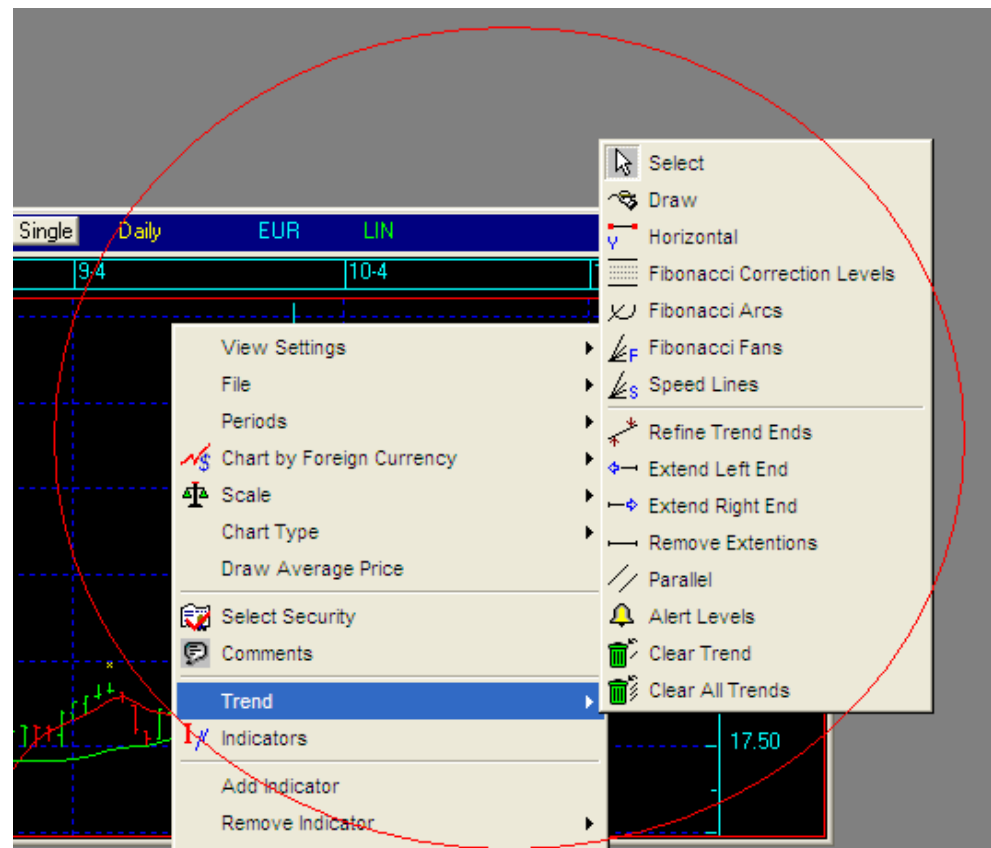


From Right-Click, you can change the period of your Chart.

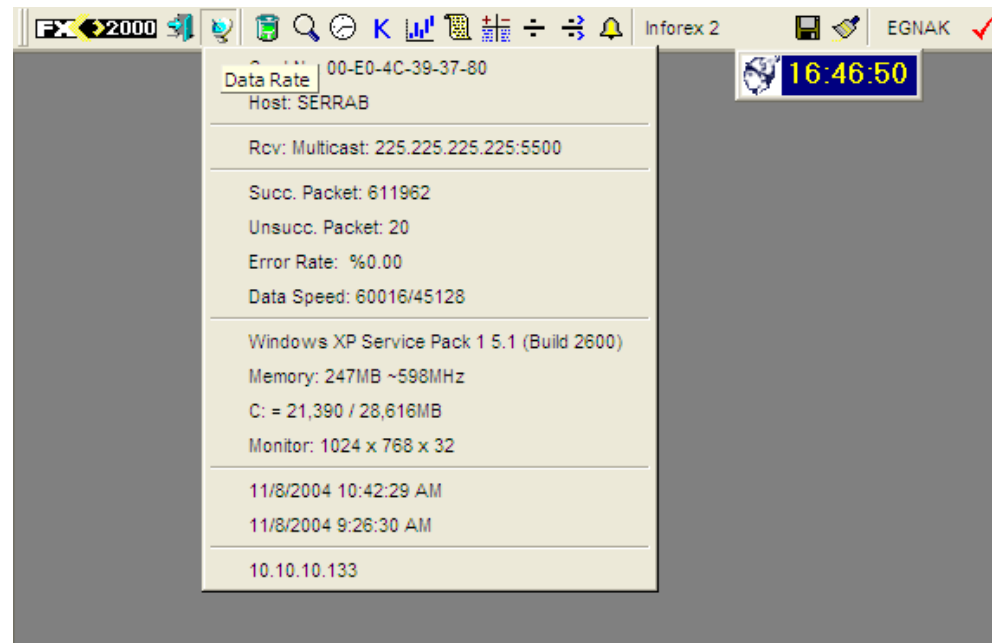
## How to Change Chart-type




## How to Draw Trend lines



## Data Speed and Connection



Click on the  button to see your data. You must make sure that your error rate is 0.00% and unsuccessful packets are less than 50. If this is not the case, please call Technical Support Desk of Inforex at 210. 325 5511.

You must also make sure that the ASE Clock is correct. This is the best way to confirm that you are receiving data. If for any reason, the ASE Clock has stopped, then you must again call the Support Desk at Inforex and they will most likely to ask you to check two windows, which are displayed on the next page.

The first one is Connection Settings, which you access with a Right Click anywhere on the program via Settings. The second one is Licences window, which is again accessed via a Right Click anywhere on the program via Settings. You must talk through the Connection Settings with the Support Desk of Inforex, and at the Licences window, you must click the ALL button, and make sure that some of the licences are ticked, and the Close the window.

